

About the plan

The 2040 System Plan presents our strategic priorities for the next 20 years, providing guidance for decision making, resource allocation and focus areas.

For the last 60+ years we have served our community well. Our satisfaction ratings are high, our parks and trails are well loved, and our natural resources management is a model to other agencies. But, we don't live in a static world and past performance does not predict future success. We recognize our world is changing, and we need to change with it to protect our natural resources, remain relevant and best serve all of our community members.

We believe people who are connected to nature are happier, healthier and more likely to be environmental stewards. We will make nature easily accessible for all people to experience and appreciate on a regular basis. We will foster connections to nature through high-quality programs and recreation offerings. We will inspire curiosity, promote stewardship and improve the quality of life today while preserving natural areas for future generations.



Vision

Every person can connect with nature every day.



Goal 1: You belong here.

We are welcoming and convenient to all people.

We will:

- Engage and embrace all people with respect, kindness and dignity.
- Identify barriers and actively remove them.
- Encourage, listen to and support new and loyal visitors.
- Offer something for everyone.



Goal 2: Parks matter.

We are essential to vibrant, healthy and livable communities.

We will:

- Prioritize the protection, restoration and management of natural resources.
- Integrate Three Rivers directly into the communities we serve.
- Serve our residents in creative, mission-driven ways.



Goal 3: Lead by example.

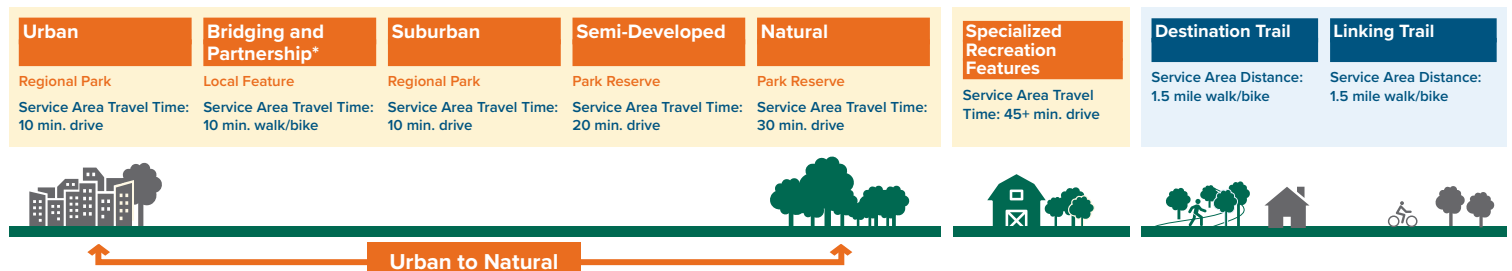
We are intentional and innovative in meeting the needs of today while anticipating and protecting the needs of tomorrow.

We will:

- Take care of our resources and stay true to our mission.
- Embrace new ideas, think big, take risks and learn from our mistakes.
- Consider tomorrow when making decisions about today.

Recreation Opportunity Spectrum

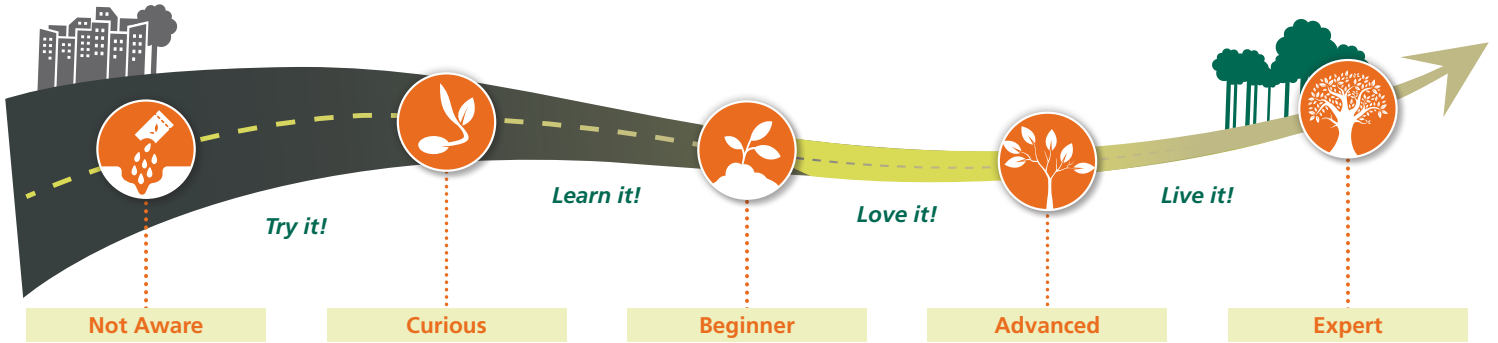
The Recreation Opportunity Spectrum (ROS) is a classification tool to ensure a diversity of experiences are present throughout our system. The ROS recognizes that people are as diverse as the resources we are trying to protect. Each person is looking for a unique experience – some crave complete nature immersion and some thrive in highly social settings. By planning a system composed of a wide range of offerings and settings, we are better positioned to serve all people.



*Moving forward, these parks will allow us to enhance communities in partnership with cities and local agencies to introduce new users to the greater regional park and trail system — making regional parks and trails more accessible for all to enjoy.

Visitor Experience Model

The **Visitor Experience Model (VEM)** is a framework for understanding the program, service and facility needs of our visitors. The model functions as a spectrum and is designed to meet people where they are. It provides a structure for how we encourage and support community members in their nature-based education and outdoor recreation growth by categorizing the experiences and needs of individuals into five stages.



By recognizing each category as an independent and specialized group, we can customize our marketing, outreach, engagement and offerings to better serve those in each category.

While we will maintain the same level of support for specialized offerings, this plan calls for a renewed focus on introductory offerings to ensure we are making nature available and accessible to all community members in ways that are convenient and comfortable.

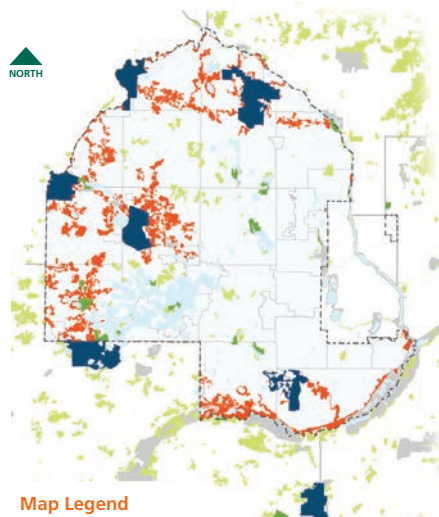
2040 System of Natural Resources, Parks and Trails

We are at a time of great change in respect to continued suburban sprawl, population growth and in the composition of our population. Each of these changes influences how we protect natural resources and best serve our community members moving forward.

- We must recognize the importance of protecting and restoring natural resources that may be outside our parks, but are directly connected to the plant communities, waterways and wildlife inside our system.
- In recognition of future demand, we must grow and evolve, identifying and securing additional park and trail search areas to meet the needs of the growing population.
- We will place greater effort on developing park and trail experiences close to where people live. Bridging and partnership parks will serve as entry points into our system, especially for those not yet connected to Three Rivers.

Suburban Hennepin County Maps

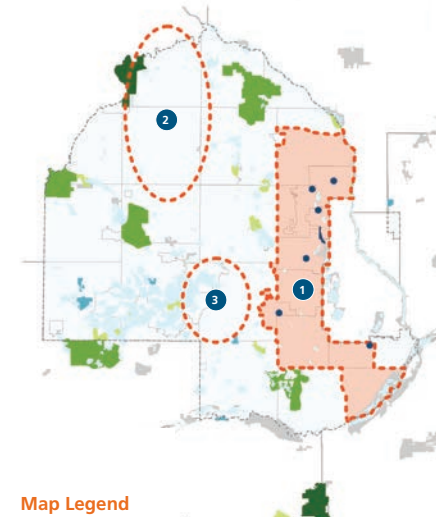
2040 Natural Resources System



Map Legend

- Natural Resources Protection Areas (Three Rivers Park Reserves)
- Natural Resources Search Corridors
- Significant Natural Resources Area
- Three Rivers Regional Parks
- Other Regional, State or Federal Parkland

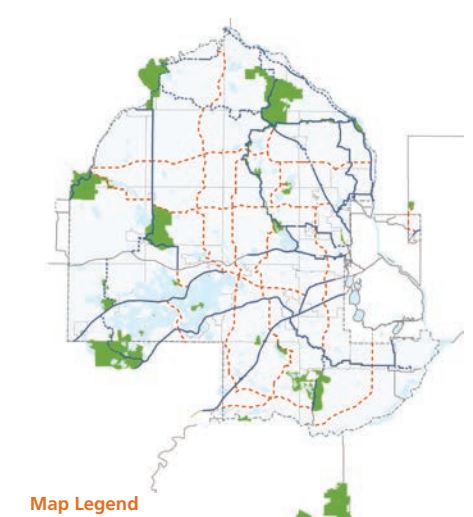
2040 Park System



Map Legend

- Suburban (Regional Park) Search Area
- Bridging & Partnership Search Area
- ROS: Park Classification
 - Special Recreation Feature
 - Bridging & Partnership
 - Suburban
 - Semi-Developed
 - Natural
 - Other Regional, State or Federal Parkland

2040 Regional Trail System



Map Legend

- Three Rivers
 - Existing
 - Planned
- Other
 - Existing
 - Planned
- Search Corridor